

Save Money and Energy through Central Control of End-Node Power Consumption

When it comes to power management of your PC networks, the challenge lies in balancing financial, environmental, and productivity considerations. In addition, IT's mandate to maximize system availability subtly conflicts with the view of some in the power management community in that "standby," "hibernate" and "off" imply a period of downtime as the system returns from power-saving mode to availability.

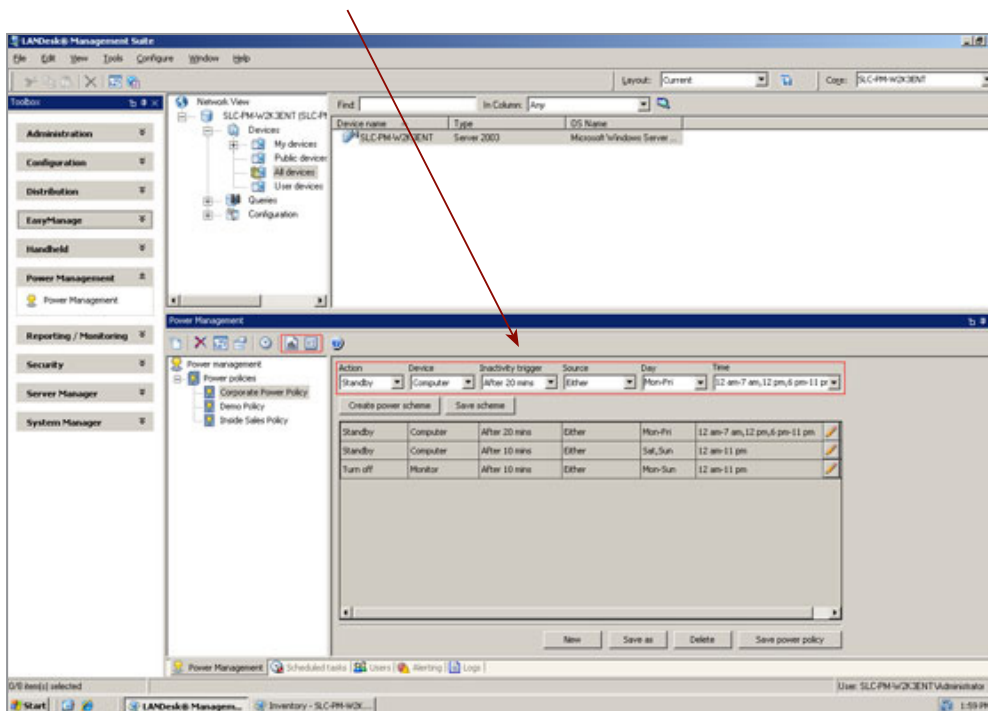
You may already know LANDesk® Management Suite as the proven systems-lifecycle management solution from Avocent that lets you see, manage, update and protect your enterprise IT systems from a single console to boost efficiency, save time and reduce demands on resources. And now with the service pack (SP2) release of LANDesk Management Suite 8.8, you possess the tools to conduct prudent power management and balance the trade-offs between power savings and system availability.

Easier Access, Greater Flexibility, and Enhanced Reporting

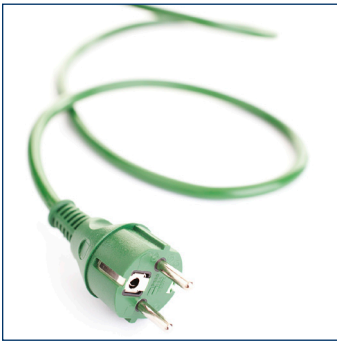
As a LANDesk® Management Suite customer, you've had the ability to set your own power management policy and enforce it automatically. However, with the release of SP2 for version 8.8, you gain a new user interface and the local scheduling capability of LANDesk to easily create and configure power policies and settings beyond what Microsoft Windows offers, and deploy them as you would any other LANDesk Management Suite-based policy. For example, we've added "chronological variability" that enables you to set management policies that can vary by hour of the day and day of the week, something that Windows doesn't allow you to do natively.

Create and Configure Power Policies and Settings

As shown below, you can define power schemes or policies by selecting options from the drop-down boxes highlighted below: Action, Device, Inactivity trigger, Source, Day, and Time.

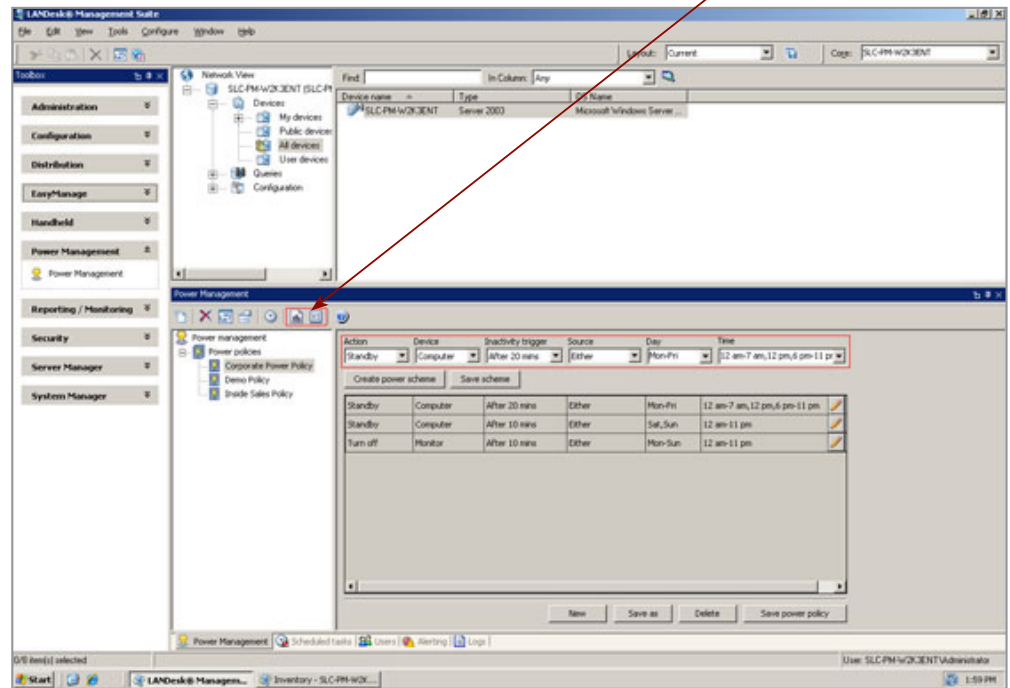


Multiple power schemes with "chronological variability" can be combined into a single power policy. Once saved, the policy is distributed to target computers like any other policy.



Enhanced Reporting Capabilities

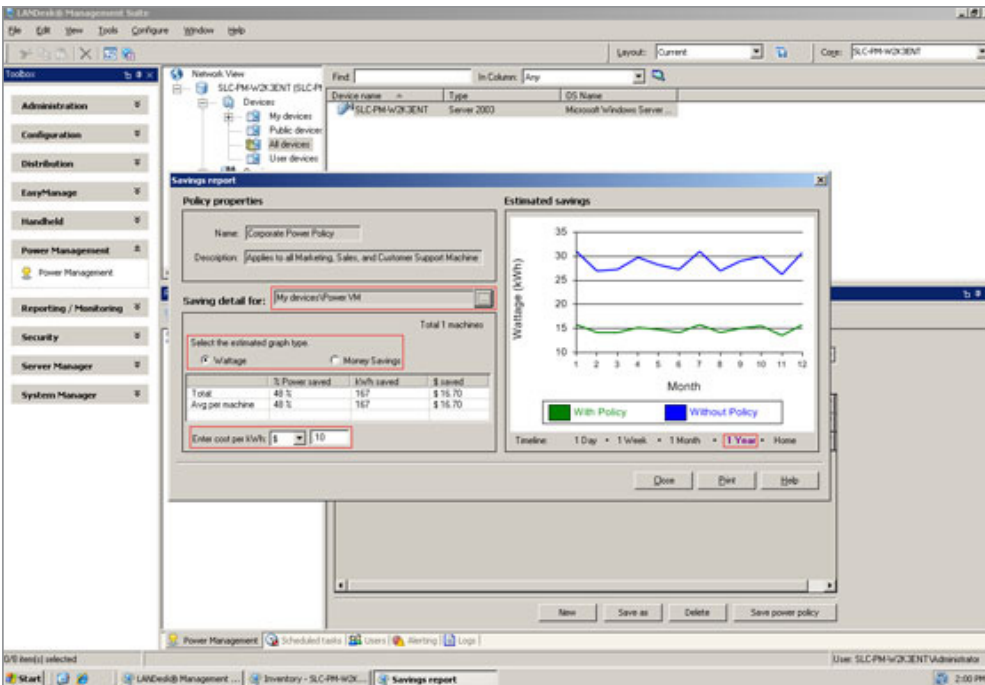
In addition to policy scheduling flexibility, SP2 of version 8.8 offers enhanced reporting features. Prior to distribution, you can evaluate the estimated power and financial savings by clicking the reporting button (the left button in the small red box below).



In the area of power management for example, Brevard estimates that by simply using LANdesk to turn off or put to sleep most of its 25,000 computers each day at 6:00 p.m. automatically, it will be able to enjoy between \$300,000 and \$500,000 in annual power savings.

—LANdesk Customer Success Story: “Brevard Public Schools—Excellence in Education and IT Administration,” 2008

Clicking the reporting button brings up the “Savings report” window shown below.



Within the savings report window you select:

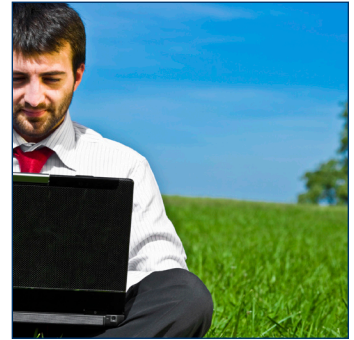
- The group of computers you want to target for analysis with the policy
- To graph savings by wattage or by financial savings
- The actual cost per kilowatt hour
- The desired timeframe (e.g. weekly, monthly, annually)

The report output shown estimates 48% savings in wattage consumed over one year (167 kilowatts or \$16.70 per machine). The typical savings per system are \$10 to \$20/ year (computer plus monitor).

Key Features and Benefits

The SP2 release of LANDesk Management Suite 8.8 offers these advantages and more:

- **Integrated power management**—The user interface integrates into the LANDesk Management Suite console
- **New, comprehensive reporting**—Displays the percentage of power saved, the kilowatt hours saved, and the dollars saved. You can estimate power savings before deploying a policy, easily document power savings, and provide accurate reports to management.
- **Custom wattage settings**—You can assign customized wattage settings to specific types of systems, facilitating high degrees of accuracy.
- **Energy savings** of \$10 to \$20/year per machine (computer and monitor) for organizations that don't currently have power management policies in place.



For IT departments, a focus on costs—and energy costs in particular—is a logical place to start. ... Reducing the electric bill cuts costs and frees up funds for additional IT investments.”

—Elana Varon, “A Little Bit Green”, *CIO Magazine*, April 1, 2008

Experience the Eco- and CFO-Friendly Advantages of End-Node Power Management Control

Now you can manage the trade-offs between power savings and system availability while helping your organization balance financial, environmental, and productivity imperatives. [Click here](#) to download our free whitepaper that provides the rationale behind our recommendation that customers apply simple, balanced power-saving policies, or paste this link into your browser: <http://www.landesk.com/WorkArea/downloadasset.aspx?id=5534>

For more information on LANDesk Management Suite 8.8 and SP2, please contact your LANDesk Solutions Provider, or call LANDesk at 1-800-982-2130 or email us at sales@landesk.com.

From *Computerworld's* “Five Steps to a Leaner, Greener Desktop”

Some corporations, however, are starting to get the message. Network administrator Keith Brown deployed LANDesk Software's LANDesk to manage—and lock down—power settings on all laptops, desktops and attached monitors at Gwinnett Hospital System in Lawrenceville, Ga. ... LANDesk takes advantage of Intel Corp.'s vPro Active Management Technology (AMT), a feature built into its vPro series processors that supports remote management. That allows LANDesk and similar tools to remotely turn on PCs, upload updates, and turn them off again. “It allows you to do ‘out-of-band’ management on desktops,” allowing control even when machines are turned off, explains Brown.

For times when laptops are turned on—that is, when they're being used by employees—Lenovo recommends configuring the disk drive to spin down after five minutes of inactivity, the monitor to go blank at 10 minutes, and the machine to go into standby, or suspend, mode after 20 minutes.

“The biggest offenders are the monitors,” says Brown. Most businesses have already begun phasing out CRTs in favor of more efficient LCDs, which use about one-third less power, but they still have plenty of CRTs waiting to go.

Energy savings can add up. Brown estimates that Gwinnett Hospital System is already saving between \$30,000 and \$60,000 a year in electricity costs by replacing about 70% of its CRTs with LCD monitors and using automated power management tools.

—Robert L. Mitchell, “Five Steps to a Leaner, Greener Desktop”, *Computerworld* Learn Fast Guide, 2008, pgs. 8-9.

Visit www.landesk.com for more information.

This information is provided in connection with LANDesk® products. No license, express or implied, by estoppel or otherwise, or warranty is granted by this document. LANDesk does not warrant that this material is error free, and LANDesk reserves the right to update, correct or modify this material, including any specifications and product descriptions, at any time, without notice. For the most current product information, visit <http://www.landesk.com>.

Copyright © 2008, Avocent Corporation. All rights reserved. LANDesk and Avocent and their respective logos are registered trademarks or trademarks Avocent Corporation, its subsidiaries or its affiliated companies in the United States and/or other countries. Other brands and names may be claimed as the property of others. LSI-0736 08/08/JBB/NH/CA

