



## LANDesk® Patch Manager

Automate Vulnerability Assessment and Patch Management  
across Your Heterogeneous IT Environment

*"LANDesk® Patch Manager gives you a complete detailed list of which machines have been updated and which machines have not. [And] LANDesk tests the patches before we get them, giving us more reliable patches."*

— Adel Kamali

Head of User Support  
Abu Dhabi Water and Electricity  
Authority (ADWEA)



*"Now we can secure and patch our entire environment in one hour with a single engineer. LANDesk saves us at least 280 man-hours per patch."*

— Edward Skaff

Manager  
Exempla Healthcare

*"The console lets us deploy patches remotely so we don't have to send anyone out to a site. We can manage the entire patch process from our operations here in Sydney, pushing out updates, rebooting computers and then knowing with a certainty that they'll function properly the next day."*

— Luke Doherty

IT Manager  
InterContinental Hotels Group PLC

## Easily Keep Up with Security Threats and Patches

Whether from hackers, viruses or ordinary bugs, your software and operating systems are vulnerable to security and performance threats. Keeping up with the constant stream of patches is an ongoing drain on your IT staff as they research, evaluate, test and apply patches across your enterprise. Failing to keep up with the pace puts your whole network at risk.

### LANDesk® Patch Manager: Complete Patch Management

LANDesk® Patch Manager is a subscription service that automates vulnerability assessment and patch management across heterogeneous IT environments. It helps you establish and maintain baseline security, stability and performance for your applications and operating systems.

LANDesk Patch Manager gives you the power to:

- Boost productivity and reduce headaches by quickly evaluating systems with active vulnerability scanning.
- Maximize peace of mind by identifying vulnerabilities against industry-standard information sources.
- Gain control with a single tool to research, review and download available patches.
- Increase system uptime and user satisfaction by efficiently remediating known vulnerabilities through automated targeting and patch distribution.
- Automate patch deployment with LANDesk® Process Manager's Parallel Patch Process, which is included
- Automatically maintain patch currency and save time by establishing active patch management policies.

When you need to take control and implement efficient patch management, you can with LANDesk Patch Manager.

### Efficiency Increases Productivity

LANDesk® Patch Manager lets you actively scan your managed computers to identify application and operating system vulnerabilities against industry-standard information sources. You define your own custom vulnerabilities to support your individual application, policy or security needs. You can view assessment results directly in the console. You can also filter by platform and sort by vulnerability, application or individual computer to help develop a remediation plan. And patches can be stored on the local network so they're readily available to speed distribution.

With LANDesk Patch Manager you can quickly identify and download the patch associated with each vulnerability. And, with a single click, you can research requirements, dependencies, interactions and known issues for each patch. You can select targets and choose a remediation method directly from the list of detected vulnerabilities, so you move from problem to solution more quickly. Plus, you can easily identify unique needs or problems, including systems that couldn't be assessed or those that need manual remediation.

## Efficiency Increases Control

LANDesk® Patch Manager delivers versatile, efficient patch remediation. It lets you quickly schedule distribution tasks to apply patches to individual computers, computers' roles or groups of computers by integrating with your existing directory, such as Active Directory. You can establish policies that install specific patches for specific operating systems automatically. And you can download and install new patches as they become available with autofix remediation.

You can easily report on remediation efforts, including which computers required a specific patch, which ones are already patched and those that required manual remediation. You can also quickly identify computers that couldn't be updated in order to address special needs or requirements and report both success and ongoing remediation needs.

## Save Time

Using LANDesk® Patch Manager, you gain the advantage of exclusive LANDesk® software distribution technologies. LANDesk® Targeted Multicast™ technology minimizes bandwidth used when distributing large packages to multiple users—without requiring dedicated hardware or router reconfigurations. LANDesk® Peer Download™ technology leverages local bandwidth efficiency to access packages that were already delivered to a subnet. LANDesk Patch Manager lets you use these technologies to easily pre-stage patches to each local system cache and then quickly roll them out once approved by your change control board. What's more, you can automate patch deployment with the included Parallel Patch Process of LANDesk® Process Manager, improving your ability to patch vulnerable systems automatically and maintain patch policies across your network.

## Rest Assured

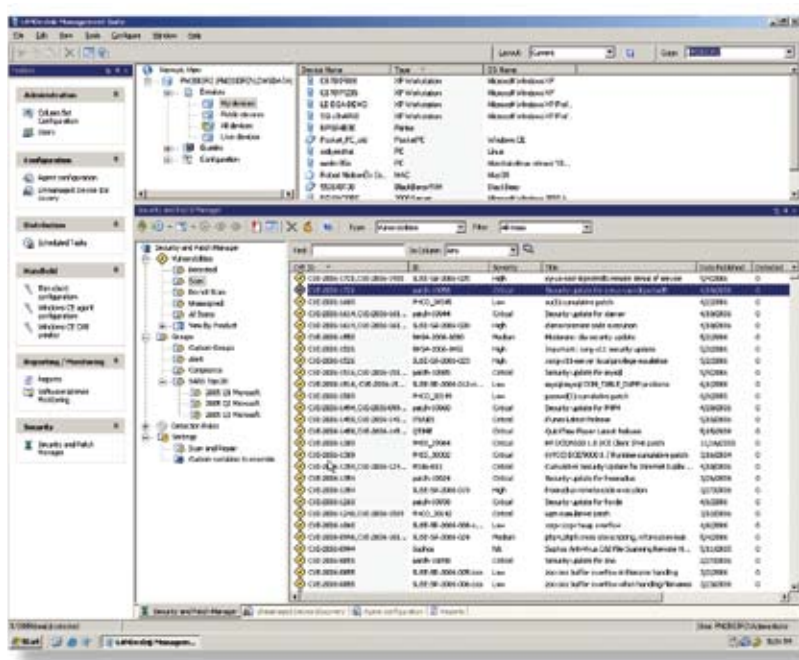
LANDesk® Patch Manager lets you set up email or pager alerts when a vulnerability or a specific severity level is detected. It also monitors the status of each install and displays the status on screen, so you can quickly and easily track remediation and ensure that each patch reached its target. When remediation is complete, you can audit each target machine to ensure correct configuration and report successful remediation. Rest assured, patches can be installed quickly and automatically, freeing you to focus on those machines that really need your time.



## Patch, Manage, Configure and Secure through the Same Single Console

LANDesk® Patch Manager is a stand-alone patch subscription service that also integrates with LANDesk® Management Suite's built-in patch and update management technology to let you proactively see, manage, update and protect your IT systems through a single console. You can start with LANDesk Patch Manager and upgrade to the full LANDesk Management Suite whenever you're ready.

LANDesk Patch Manager can also be easily upgraded to LANDesk® Security Suite for a comprehensive security management solution that lets you automatically detect and deploy security patches with active endpoint security management, quarantine capabilities, active threat analysis, spyware detection and removal, antivirus enforcement, XP SP 2 firewall enabling and configuring, access control, data leakage protection, application blacklisting, configuration security tools and more—all from a single console.



In LANDesk® Patch Manager, view vulnerabilities directly in the console and sort by vulnerability, patch, application or machine to quickly identify needs. Then remediate vulnerabilities directly from the display with a simple right-click.

# Key Features

## Scanning

- Set behaviors at agent deployment that determine when the vulnerability scanner runs, how required reboots are handled and whether autofix is enabled.
- Vulnerability assessment is performed using industry-standard information sources.
- Prioritized patch severity gives you added control.
- Custom vulnerability definitions let you support your own custom application, policy or security need.
- Multiple data sources for vulnerability information help ensure you have accurate patches for your enterprise systems.
- Assessment and distribution scheduling let you choose when necessary tasks are performed.
- Alerting lets you choose to be notified by email or pager when a vulnerability is detected and/or a new definition is downloaded.

## Remediation

- Patch dependency shows you which patches depend on other patches, so you know what new vulnerabilities a patch might introduce.
- Patch supercedence lets you download and distribute needed patches and filter out older and obsolete patches, speeding the time to a fully patched state; obsolete patches remain available if needed.
- LANDesk® Process Manager's Parallel Patch Process, included, automates the deployment of patches.
- Multiple delivery options include scheduled tasks, policy and autofix, to give you control over remediation; use options alone or in combination to fix current vulnerabilities and ensure future patch security.
- Endpoint reboot logic lets you choose what works for your environment—snooze, custom messages or unattended; choose to display messages to give your end-users control of when patches are installed and whether to reboot or snooze.
- Patches can be pre-staged to all end-system caches at your convenience using LANDesk® Targeted Multicast™ technology and LANDesk® Peer Download™ technology for efficient distribution and reduced impact on network traffic. When your control board approves the patch, installing it on each machine requires only a “flip of a bit” to install it off the local cache—remediation is complete as quickly as the patch can install.

- Policy-based management gives you ultimate control over each endpoint.
- Assessment and distribution scheduling let you choose when necessary tasks are performed.

## Ease of Use, Installation and Uninstallation

- Scalable architecture leverages your existing hardware to improve ROI.
- User settings are created and edited by you to gain control over client feedback, repair options, bandwidth usage and more.
- Patch history displays all patches installed on a client whether installed by LANDesk or another product.
- Patch uninstall enables easy rollback for any patch available from the LANDesk® patch management database, whether distributed using LANDesk Patch Manager or another tool.

## Analysis, Reporting and Alerting

- Reports include custom vulnerabilities, LANDesk® Updates, custom patch install and scan and repaired patches histories, patch levels and more to give you greater insight into patch status and update requirements; trending analysis also lets you evaluate your progress toward meeting corporate or industry security policies.
- Alerts include access to real-time alerting of security outbreaks and breaches with control over which vulnerabilities you receive alerts for; you can also receive alerts on newly available definitions based on type and severity and if new definitions are downloaded.
- Vulnerability reports are available from the Web console for added convenience.

## Heterogeneous Platform Support

- Full vulnerability detection and remediation for computers running Windows, Red Hat Linux, SUSE Linux and Mac OS X.
- Vulnerability detection and reporting for computers running HP-UX, IBM AI and Solaris.

Visit [www.landesk.com](http://www.landesk.com) for more information.

This information is provided in connection with LANDesk products. No license, express or implied, by estoppel or otherwise, or warranty is granted by this document. LANDesk does not warrant that this material is error free, and LANDesk reserves the right to update, correct or modify this material, including any specifications and product descriptions, at any time, without notice. For the most current product information, visit <http://www.landesk.com>.

Copyright © 2007 LANDesk Software Ltd. or its affiliated companies. All rights reserved. LANDesk, Peer Download, Targeted Multicast and Trusted Access are registered trademarks or trademarks of LANDesk Software Ltd. or its affiliated companies in the United States and/or other countries. Other names or brands may be claimed as the property of others. Each customer's results may vary based on its unique set of facts and circumstances. LSI-0680E 1107/BB/NH

